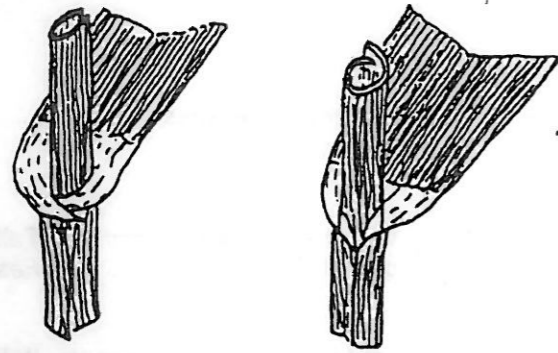
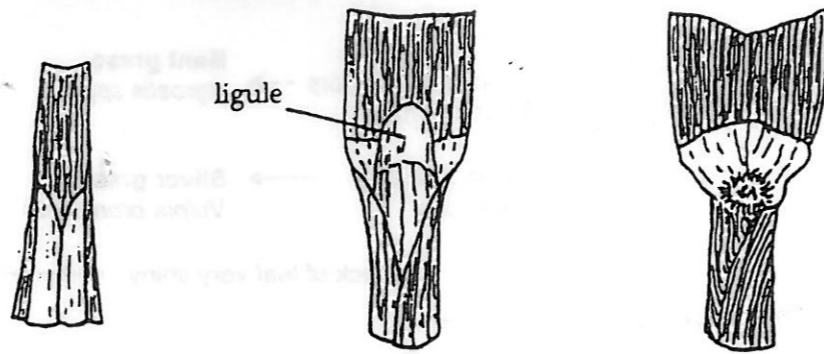


Example Diagrams



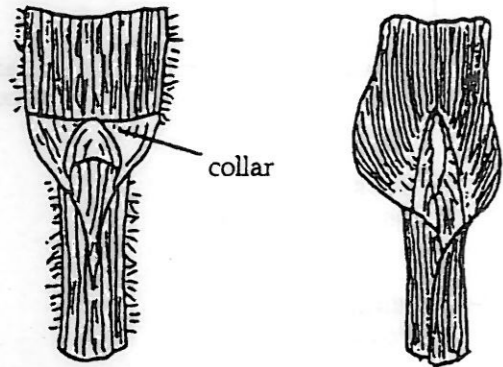
Emerging leaf rolled Emerging leaf folded

Emerging leaf is either rolled or folded



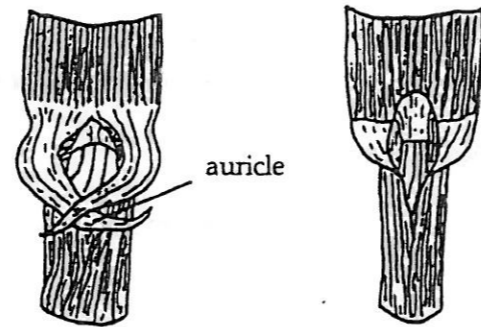
Ligule absent Ligule present Replaced by ring of hairs

Presence / absence of ligule (membranous growth at the junction of the sheath and blade).



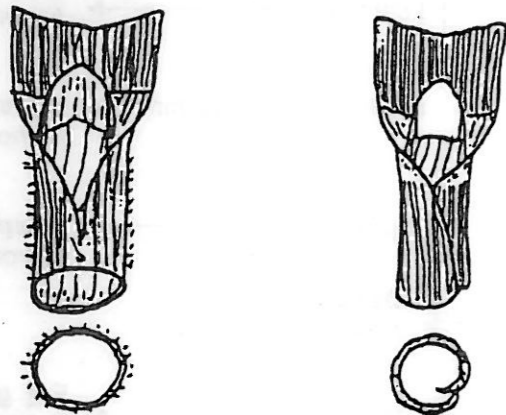
Collar prominent Collar not prominent

Prominence of collar (area at junction of leaf sheath and blade distinguished from the rest of the leaf by difference in colour).



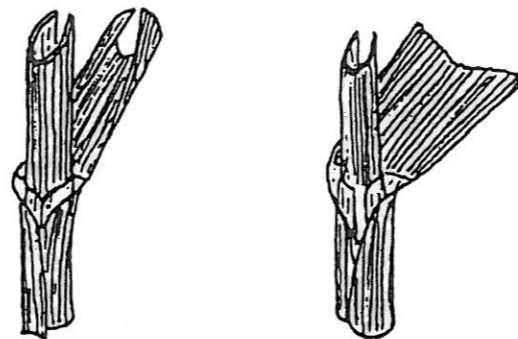
Auricles present Auricles absent

Presence / absence of auricles (small claw-like teeth at the base of the leaf blade which more or less envelopes the leaf junction).



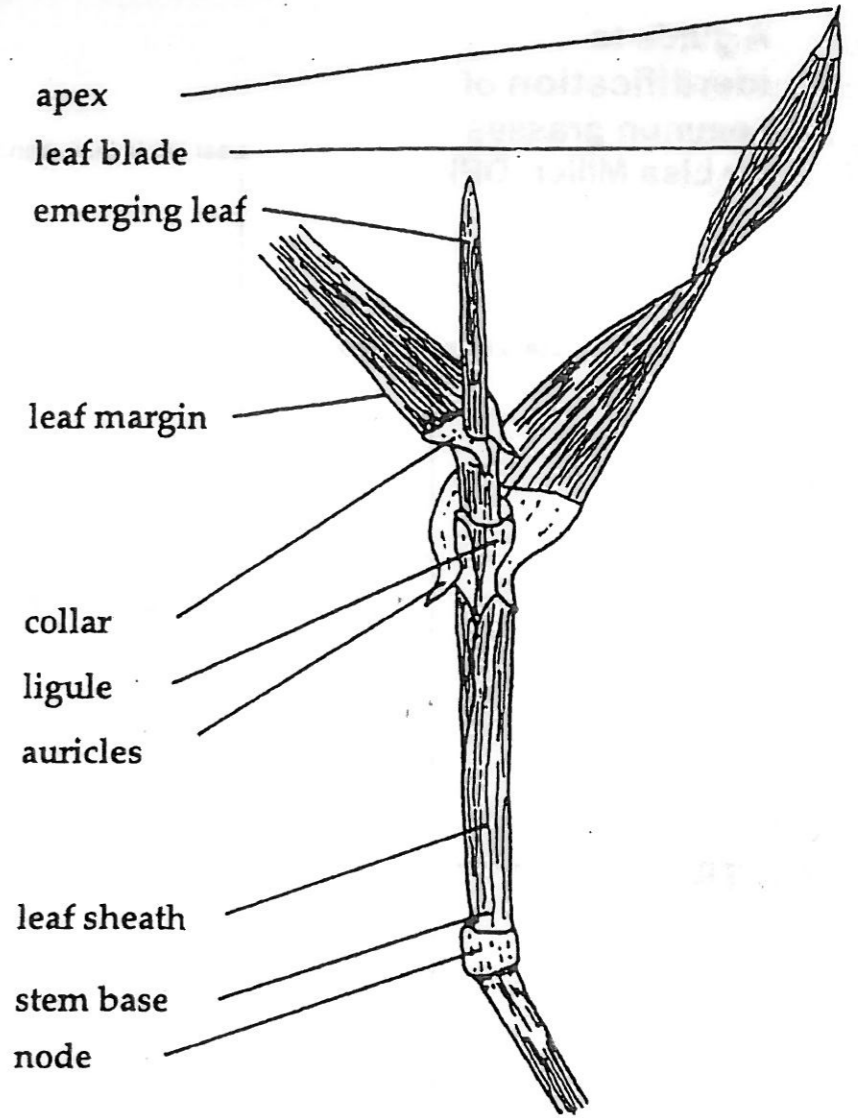
Leaf sheath tubular Leaf sheath rolled

Leaf sheath either tubular with no joins or rolled and overlaps.

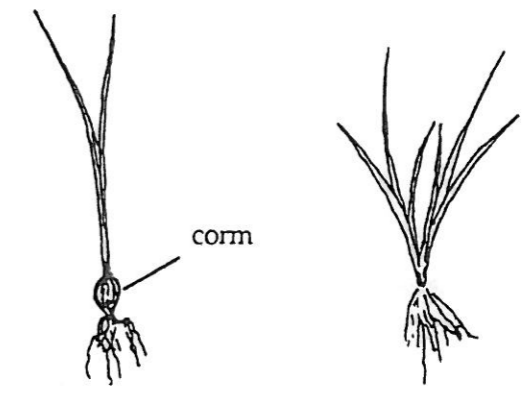


Leaf blade folded Leaf blade rolled

Leaf blade either folded or not folded.



Parts of a grass plant



Small white corm at base No corm (Toad rush)

Distinguishing onion grass and toad rush.